

ACME TOWNSHIP PARKS & TRAILS MEETING
ACME TOWNSHIP HALL
6042 Acme Road, Williamsburg MI 49690
July 20th, 2018 8:30 a.m.

ROLL CALL:

| | | | | | | | | |
|-------------------|----------|---------|---|------------|---|-----------|---|--------|
| Committee: | E | Feringa | X | Heflin | X | Heffner | X | Jenema |
| | E | Smith | X | Timmins | X | Wentzloff | | |
| Advisory: | | Heinert | X | Krogulecki | X | Kushman | | |
| Staff: | X | Winter | | | | | | |

- A. **PUBLIC COMMENT:** none
- B. **APPROVAL OF AGENDA: Motion to approve agenda Timmins 2nd. Wentzloff**
Motion carries
- C. **INQUIRY AS TO CONFLICTS OF INTEREST:** none
- D. **CORRESPONDENCE:**
 - 1. Michigan Regional Prosperity Initiative: Community Growth Grants Program – Networks Northwest- Discussed options, it is for local units of government to apply for. It will also go to the PC committee. Winter will also talk to Elk Rapids.
- E. **ACTION:**
 - 1. Approve Draft Parks & Trails Minutes 6.15.18- Wentzloff 2nd. By Heflin to approve the park and trail minutes. Motion carries
- F. **OLD BUSINESS:**
 - 1. Bayside Park Updates
 - a. Construction Progress Schedule- Discussed the artesian well that had flooded and the solutions used. Although the area will be drained a wet “feed” area will remain for the rain garden plantings.
Mowed areas will have permanent irrigation, none mowed areas will have temporary irrigation.
Discussed landscaping- Inhabitex was chosen. Number of plants had to be scaled down in order to meet budget.
August 3rd is the when Elmers hopes to have the landscaping done, a week later grass will be seeded, will take a good amount of time for the seed to take.
 - b. Bayside Park Signage - Discussed Amor signs, a local company. Committee wants the light blue as the most visible color. Waiting for pricing, the concern of distance of the sign company was discussed. Looking into more local options.
 - 2. Trail Updates
 - a. North Bayside Park to Deepwater Point Natural Area connector- Tart has the money for engineering and construction of the connector to deep water point. There is a hold up at getting the trail through the resort property.
 - b. Acme Connector Trail – Holiday Inn Express License-Holiday Inn has agreed to a 20 year license. Jeff Jocks is going over the language.

- c. TVC 2 CHX Trail – Project Agreement The MOA was agreed to and signed by the board.
 - i. Landowner Listening Sessions (August 8 & 9)- Megan Olds is facilitating. The times on both days are 10 am and 7pm each session will last about an hour and a half. August 8th will be the session in Acme t the Williamsburg dinner theater. August 9th. Will be in Elk Rapids at the Lighthouse center. Approximately 600 mailings went out these events are for adjacent landowners.
 - ii. Public Open House (August 22)- open to everyone interested in the project it will be at the Elk Rapids harbor.
 - iii. Fisherman’s Island State Park preliminary design- an RFP is going out for the trail segment from fisherman’s island to CHX.
- 3. Park System Signage - Quotes- Discussed reusing materials for the sign posts to save money.
- 4. 2018 Parks & Trails Project Goals- time to renew the park and rec. Plan. will coordinate with John I and the PC for public input.
- 5. Art In The Park- Shawn and Dusty met with Christie Minervini, she recommends getting professional help setting up the structure. The Acme board supports the art as long as no money is involved.
- 6. Bayside Park Dedication Ceremony- Moved the dedication ceremony to next May. Will be recognizing donors.

G. NEW BUSINESS:

H. PUBLIC COMMENT

ADJOURN: Motion to adjourn Timmins, 2nd. By Wentzloff. Meeting adjourned at 10 am.



ACME TOWNSHIP PARKS & TRAILS MEETING
ACME TOWNSHIP HALL
6042 Acme Road, Williamsburg MI 49690
July 20th, 2018 8:30 a.m.

ROLL CALL:

Committee:

| | | | | | | | |
|--|---------|--|------------|--|-----------|--|--------|
| | Feringa | | Heflin | | Heffner | | Jenema |
| | Smith | | Timmins | | Wentzloff | | |
| | Heinert | | Krogulecki | | Kushman | | |
| | Winter | | | | | | |

Advisory:

Staff:

A. PUBLIC COMMENT:

B. APPROVAL OF AGENDA:

C. INQUIRY AS TO CONFLICTS OF INTEREST:

D. CORRESPONDENCE:

1. Michigan Regional Prosperity Initiative: Community Growth Grants Program – Networks Northwest

E. ACTION:

1. Approve Draft Parks & Trails Minutes 6.15.18

F. OLD BUSINESS:

1. Bayside Park Updates
 - a. Construction Progress Schedule
 - b. Bayside Park Signage
2. Trail Updates
 - a. North Bayside Park to Deepwater Point Natural Area connector
 - b. Acme Connector Trail – Holiday Inn Express License
 - c. TVC 2 CHX Trail – Project Agreement
 - i. Landowner Listening Sessions (August 8 & 9)
 - ii. Public Open House (August 22)
 - iii. Fisherman’s Island State Park preliminary design
3. Park System Signage - Quotes
4. 2018 Parks & Trails Project Goals
5. Art In The Park
6. Bayside Park Dedication Ceremony

G. NEW BUSINESS:

H. PUBLIC COMMENT

ADJOURN:



MICHIGAN REGIONAL PROSPERITY INITIATIVE: COMMUNITY GROWTH GRANTS PROGRAM

Release Date: July 18, 2018
Due Date: September 10, 2018

Michigan's Regional Prosperity Initiative (RPI), as initiated by Governor Snyder and signed into law, encourages local private, public and non-profit partners to identify regionally-aligned growth and investment strategies. The ultimate goal of the RPI is to create prosperity by making this region an even better place to live, work and play.

Through the RPI, Networks Northwest is making funds available for the ten-county region of Antrim, Charlevoix, Emmet, Benzie, Grand Traverse, Kalkaska, Leelanau, Manistee, Missaukee, and Wexford, and will provide direct financial support to communities for collaborative, action-oriented projects that will enhance our communities' sense of place and build the foundation for a stronger regional economy.

Grants of up to \$25,000 will be made available on a competitive basis to city, village, township, and county governments from the ten-county (NWMCOG/Northwest Prosperity Region #2) region for projects that implement locally- or regionally-adopted plans.

Purpose

The Regional Prosperity Initiative Community Growth Grants Program is intended to strengthen our region by removing barriers and creating incentives for greater public and private sector investment in our region. Successful projects will create the conditions for sustainable and efficient growth and development by implementing strategies that are consistent with local values, community goals, and help to build a more robust regional economy. **Projects must work towards implementation of goals included in a locally- or regionally-adopted plans.**

Project Application and Selection

All city, township, village, and county governments in Antrim, Benzie, Charlevoix, Emmet, Grand Traverse, Kalkaska, Leelanau, Manistee, Missaukee, and Wexford Counties are eligible to apply for financial assistance.

The NWMCOG is accepting applications in the form of clear and concise proposals of no more than 4 pages. Proposals should contain all of the following:

- **Purpose Statement.** Summarize the purpose of the project.
- **Background and Need.** Why did you apply for this grant? What is the need for this activity?
- **Project Goals and Activities.** In a brief statement, please identify the project goals. What do you hope to achieve? What activities will be completed to meet the community's needs? Who will complete the work?
- **Participant Information.** Describe your community's organizational structure, including staff capacity and leadership. Who are the partners and how will they participate in the project?

- **Project Area.** Please provide a brief description of the project. *Maps and conceptual drawings do not count towards page count.*
- **Project Commitment.** The proposal must include a commitment to provide matching funds totaling 25% of the total project cost.
- **Project Budget and Narrative.** Please show total project costs, additional funding sources, and how the Community Growth Grant funds will be applied to the project.
- **Innovation.** Does your program/project incorporate a new approach or methodology?
- **Inclusion in Adopted Plans.** How does your program/project implement goals or objectives of adopted local, county, or regional plans?
- **Community Impact.** What will be different in the community if your project is successful? How will the outcomes of the project have a long-term community benefit?
- **Performance Measures.** How are the impacts of this activity measurable?

An application review committee will evaluate all applications received objectively and with use of a scoring rubric. The success of an application will be determined by its ability to demonstrate a clear linkage to regional initiatives, completeness and clarity of purpose, the likelihood of project success, level of local commitment, and most importantly how the proposal will create the conditions for further investment.

For questions regarding this grant opportunity, please contact Kathy Egan by email (kathyegan@networksnorthwest.org) or phone (231-929-5057).

To Apply:

Grant applications must be received no later than 4 p.m. on September 10, 2018. Please submit applications as Adobe Acrobat .pdf documents (preferred method), to kathyegan@networksnorthwest.org or mail to:

Networks Northwest
 Attn: Kathy Egan, Community Planner
 PO Box 506
 Traverse City, MI 49685

Phone: 231-929-5057

ACME TOWNSHIP PARKS & TRAILS MEETING
ACME TOWNSHIP HALL
6042 Acme Road, Williamsburg MI 49690
June 15th, 2018 8:30 a.m.

ROLL CALL:

| | | | | | | | | |
|-------------------|---|---------|---|---------|---|-----------|---|--------|
| Committee: | x | Feringa | x | Heflin | x | Heffner | x | Jenema |
| | x | Smith | x | Timmins | x | Wentzloff | | |
| Advisory: | | Heinert | | Kushman | | | | |
| Staff: | x | Winter | | | | | | |

- A. **PUBLIC COMMENT:** Gordie LaPoint - 6375 Plum Drive - asked about trails in Yuba. Zollinger was there to answer the question.
- B. **APPROVAL OF AGENDA:** Motion to approve the agenda Timmins, 2nd. By Wentzloff motion carries.
- C. **INQUIRY AS TO CONFLICTS OF INTEREST:** none
- D. **CORRESPONDENCE:** none
- E. **ACTION:**
 - 1. Approve Draft Parks & Trails Minutes 05.18.18- **Motion to approve the draft minutes from 5-18-18 Heflin, 2nd. Wentzloff. Motion Carries.**
- F. **OLD BUSINESS:**
 - 1. Bayside Park Updates- Winter gave an update- construction schedule is on track
 - a. Solar Lighting- Winter attended a workshop and gave his feedback. Discussion followed on the benefits of solar lighting and the costs saved by not having to run electrical. Committee agreed that solar was a good option would like to pursue the solar lighting options with warm lighting instead of the cooler brighter lights.
 - b. Playground Grant Update- Winter went over the playground equipment that Jean would be pursuing grants for. Also went over the submission of the 2% grant for \$21,076 for the foot wash/drinking fountain and shade structure.
 - 2. Trail Updates
 - a. Acme Connector Trail – Engineering RFP- Winter gave an update- Meet with Dan Kelley, they now know where the trail will connect on his property. Ready to send out the RFP for the connector trail, Jenema will be taking this issue to the board to discuss. Believes Acme will hold the RFP, but may have TART review the paperwork. It will be up to the Board to ultimately decide. We would like the work done in Sept. so looking to get the RFP out asap. There is \$15,000 from the tribe, \$10,000 from Tart. Heffner asked about the Holiday Inn and if they still want a license, they do. Discussion followed. Discussed the Yuba trails and the trails through Saylor park and Winter green. Heflin gave an update as to where Americorp and the conservancy where. Jake would still like to get to the trails in Yuba this fall. Discussed the Valiquette’s land donation to make the trail in Yuba. Jenema didn’t have much information on it, said that Zollinger held the most knowledge on the topic.
 - b. TVC2CHX Trail – Project Update - Timmins update, Monday 6/18 is the first meeting with the contractors in Elk Rapids. Discussion followed.
 - 3. 2018 Parks & Trails Project Goals- briefly discussed committee members were asked to bring If you are planning to attend and are physically challenged, requiring any special assistance, please notify Cathy Dye, Clerk, within 24 hours of the meeting at 938-1350.

back 3-7 ideas to the July meeting.

Discussed signage- galvanized vs. aluminum. Galvanized still needs some maintenance as it will rust, aluminum does not. Benches come with plaques so none are needed for those. Discussed having the rules and regulations on one sign with a map below it. The signs will be changeable. Feringa will bring back fonts at the July meeting. The poles and frames of the signs, the committee agreed, would be silver. Will reach out to the watershed to see what should be written on the signs from them.

G. NEW BUSINESS:

1. Art In The Park- Smith discussed his findings. Jean gave her input; 1) keep it simple 2) use free traveling art 3) Look at ways to have developers contribute to art 4) look at what other Michigan communities are doing
Discussion followed . Jenema will take it to the board to discuss at the July board meeting.
2. Bayside Park Dedication Ceremony- discussed Christy and Cathy will take the lead. Looking at the Saturday after Labor Day.

H. PUBLIC COMMENT Heflin asked if the board accepted the park rules and regulations. Jenema said the board passed them with one adjustment

ADJOURN: Timmins 2nd. By Wentzloff, Motion to adjourn 10:07 motion carries

Shawn Winter

From: Kristina Bajtka <Kristina@amorsign.com>
Sent: Tuesday, July 17, 2018 12:07 PM
To: Kevin Krogulecki; Shawn Winter; Amy Jenema (assessoramy@gmail.com)
Cc: Klaus Heinert
Subject: Re: Acme Bayside Park Signage Package - Quotation Request

Sounds good I'll re-work the art.

Kristina

Get [Outlook for iOS](#)

On Tue, Jul 17, 2018 at 11:49 AM -0400, "Kevin Krogulecki" <kskrogulecki@goslingczubak.com> wrote:

Hi Kristina,

Thank you for the reply and input.

I think we want to go with the smaller 18"x12" signs for these. I think this is the appropriate size for this type of signage on the project.

--

Kevin S. Krogulecki | Landscape Architect
Gosling Czubak Engineering Sciences, Inc.

231.946.9191 office | 231.933.5105 direct
kskrogulecki@goslingczubak.com | www.goslingczubak.com

[Connect with us on LinkedIn!](#)

From: Kristina Bajtka <Kristina@amorsign.com>
Sent: Tuesday, July 17, 2018 10:38 AM
To: Kevin Krogulecki <kskrogulecki@goslingczubak.com>; Shawn Winter <swinter@acmetownship.org>; Amy Jenema (assessoramy@gmail.com) <assessoramy@gmail.com>
Cc: Klaus Heinert <kdheinert@goslingczubak.com>
Subject: RE: Acme Bayside Park Signage Package - Quotation Request

Good Morning Kevin,

On a campus project such as this we typically use 24" x 36" sign faces. This gives the opportunity to maintain continuity of the "look" throughout the project. If you would like us to use a standard 18" x 12" we certainly can (and we do in industrial or retail settings quite a bit). We would change to one post per sign versus the two. Let me know which direction would be best for the township and we are happy to provide it.

Kristina

From: Kevin Krogulecki [<mailto:kskrogulecki@goslingczubak.com>]
Sent: Tuesday, July 17, 2018 9:16 AM
To: Kristina Bajtka; Shawn Winter; Amy Jenema (assessoramy@gmail.com)
Cc: Klaus Heinert
Subject: RE: Acme Bayside Park Signage Package - Quotation Request

OK Great, thank you Kristina for the quick turn-around on this.

I like the look of everything here, I think I reads really well with the darker background.

I have copied Shawna and Amy from the Township so they can track the progress on this as well...

I notice that the larger signs (do not enter, one way, exit, etc.) are dimensioned as 24"x36". We typically are using a smaller sign plate for these....Closer to the 18"wx12"h with a single post.

Any thoughts from your end on this? Not sure the signs need to be that large as they will be read at really low speeds as motorists/pedestrian will be circulating the parking lot and bike trail.

--

Kevin S. Krogulecki | Landscape Architect
Gosling Czubak Engineering Sciences, Inc.

231.946.9191 office | 231.933.5105 direct
kskrogulecki@goslingczubak.com | www.goslingczubak.com

[Connect with us on LinkedIn!](#)

From: Kristina Bajtka <Kristina@amorsign.com>
Sent: Monday, July 16, 2018 10:01 AM
To: Kevin Krogulecki <kskrogulecki@goslingczubak.com>
Subject: RE: Acme Bayside Park Signage Package - Quotation Request

Good Morning Kevin,

Here is the art package for the directional signage you have requested for bayside park. The designer went with the darker blue background for these because it makes the important elements of the signs stand out. They are harder to read with the lighter blue background. Let me know if you have any questions. I will get this into estimating today and hope to have the quote to you by the end of the week.

Thank you,
Kristina

From: Kevin Krogulecki [<mailto:kskrogulecki@goslingczubak.com>]
Sent: Wednesday, July 11, 2018 11:24 AM
To: Kristina Bajtka
Cc: Shawn Winter; Amy Jenema (assessoramy@gmail.com)
Subject: Acme Bayside Park Signage Package - Quotation Request

Hi Kristina,

Thanks for taking the time to talk to me about the Acme Bayside Park project.

Attached is the signage plan that we are pursuing as part of this park improvements phase. As I mentioned, the Township will pursue later the remaining park wayfinding signage, etc.

The types and quantities of signs should be pretty well set, but please disregard the signage material details, wood posts, etc. as these are just standard materials for typical projects. We want to go with the style and material as proposed in your provided mock-up.

Please take a look and let me know if you have any questions. I will be around the remainder of the week, but out of the office this Friday. I have copied Shawn and Amy from the Parks and Trails committee as they have been involved in the Township signage process as well.

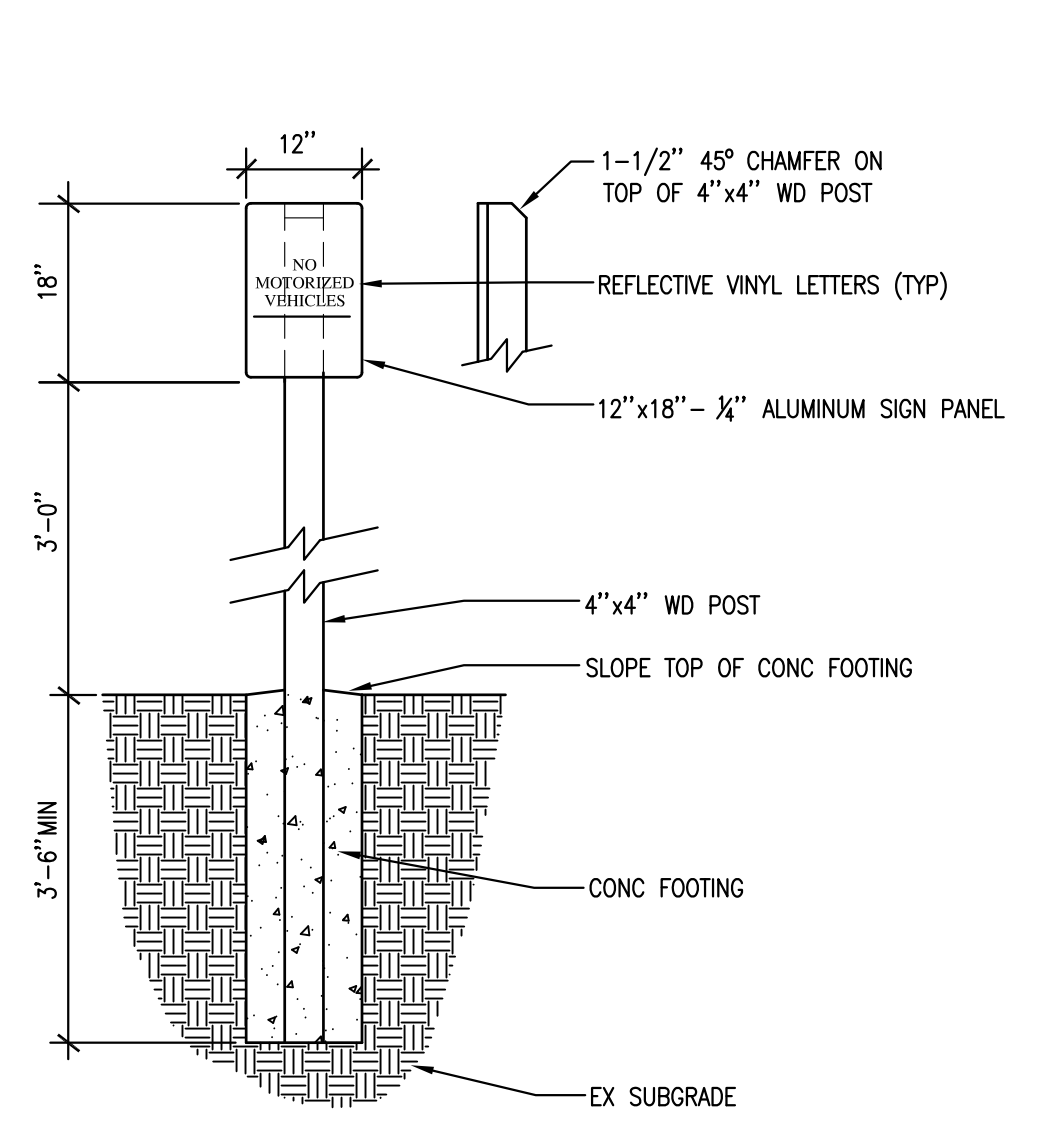
Thanks again!!

--

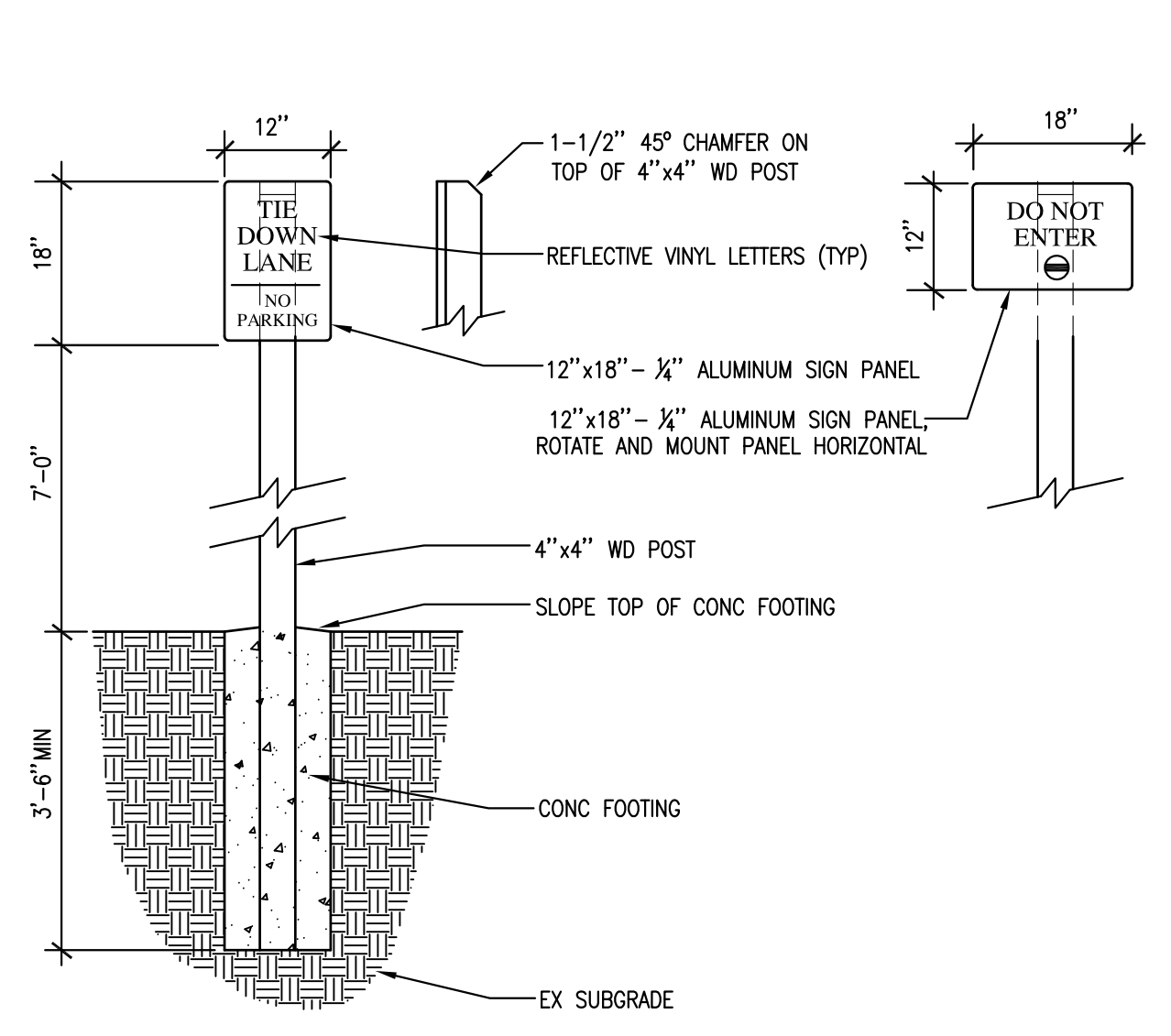
Kevin S. Krogulecki | Landscape Architect
Gosling Czubak Engineering Sciences, Inc.

231.946.9191 office | 231.933.5105 direct
kskrogulecki@goslingczubak.com | www.goslingczubak.com

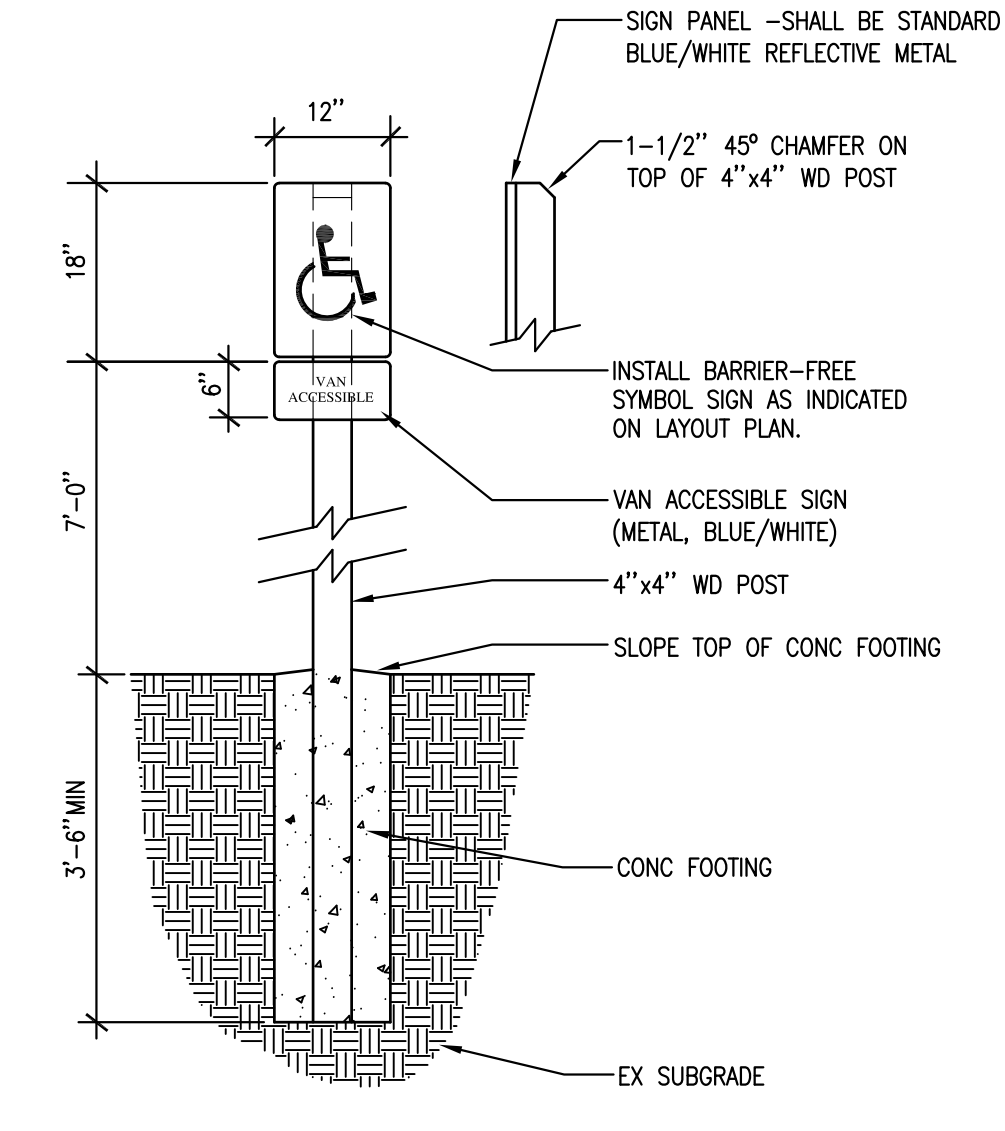
[Connect with us on LinkedIn!](#)



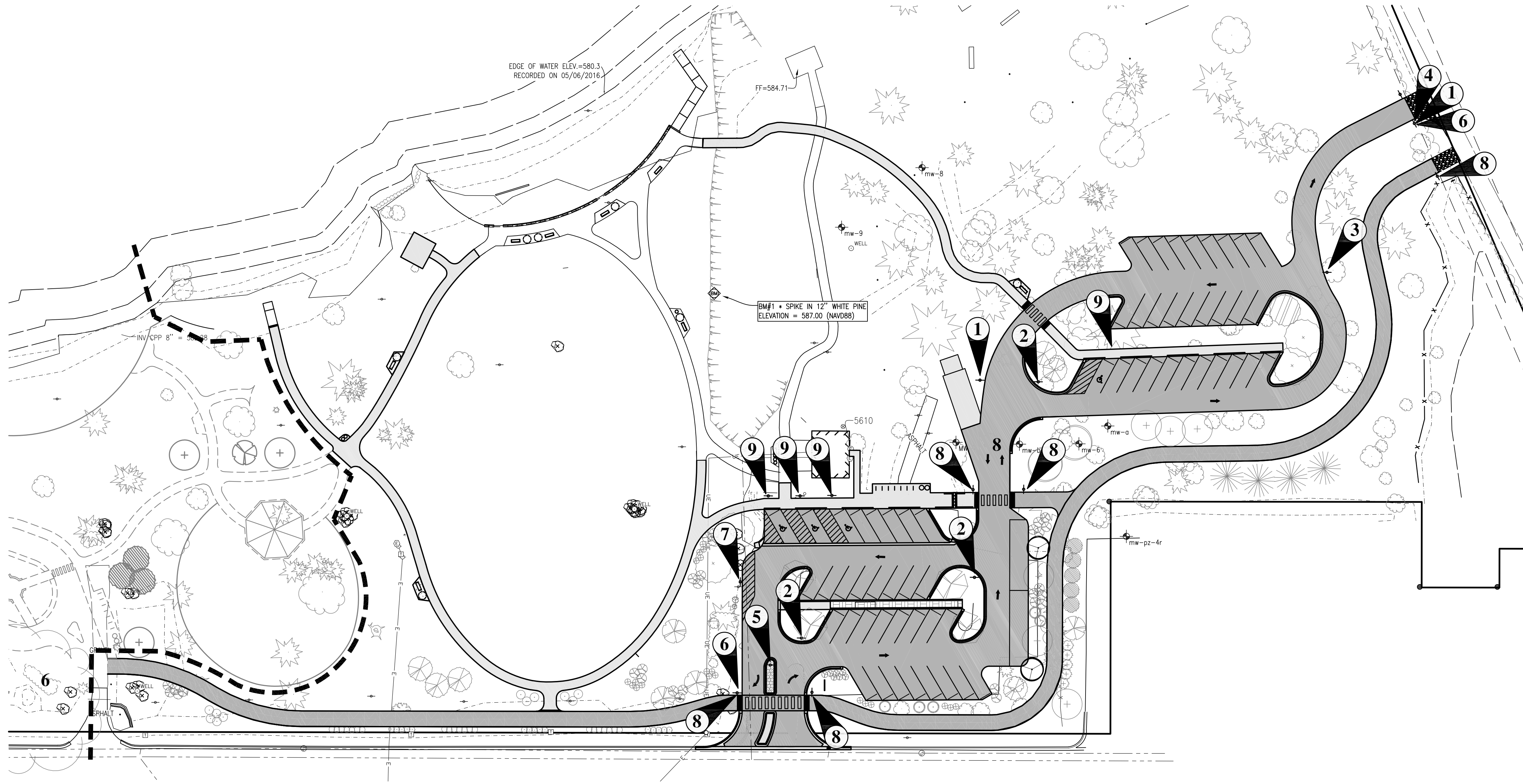
SIGN TYPE "A"
PEDESTRIAN CIRCULATION SIGN DETAIL
 NOT TO SCALE



SIGN TYPE "B"
DIRECTIONAL SIGN DETAIL
 NOT TO SCALE



SIGN TYPE "C"
BARRIER-FREE SIGN POST DETAIL
 NOT TO SCALE



SIGNAGE PLAN
 SCALE: 1" = 40'

SIGN SCHEDULE

| SIGN | TYPE | NOTES | SIDE "A" | QUANTITY |
|------|------|---------|---|----------|
| 1 | B | ROTATED | DO NOT ENTER | 2 |
| 2 | B | ROTATED | ONE-WAY | 3 |
| 3 | B | | EXIT | 1 |
| 4 | B | ROTATED | TO US-31 | 1 |
| 5 | B | | RIGHT TURN ONLY | 1 |
| 6 | B | | STOP (R1-1) | 2 |
| 7 | B | | NO PARKING ANY TIME (UTILIZE 18"x12" REGULATORY SIGN) | 1 |
| 8 | A | | PEDESTRIANS AND BICYCLES YIELD TO TRAFFIC | 5 |
| 9 | C | | RESERVED PARKING (R78VA) VAN ACCESSIBLE | 4 |

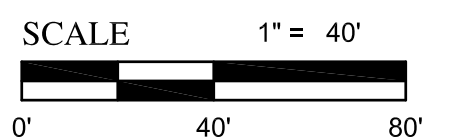
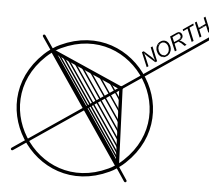
SIGNAGE NOTES

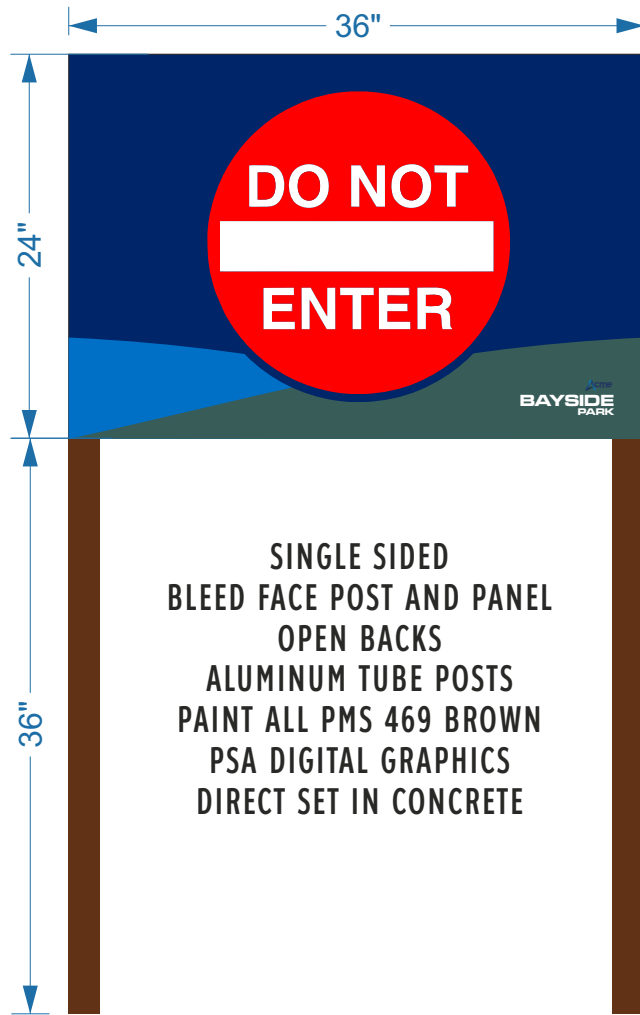
- REMOVE AND SALVAGE ALL EXISTING SIGNAGE WITHIN THE LIMITS OF CONSTRUCTION ACTIVITIES. SALVAGED SIGNAGE SHALL REMAIN PROPERTY OF THE OWNER.
- PREVENT DAMAGE OF SIGNAGE TO BE RELOCATED AND REUSED. IF DAMAGE TO REUSABLE SIGNAGE OCCURS DURING REMOVAL, THE CONTRACTOR SHALL REPLACE SIGNAGE OR REIMBURSE THE OWNER.

BENCHMARK

BM#1 (BENCH MARK)
 SET SPIKE 12" WHITE PINE
 EL=587.00 (NAVD 88)

PART OF GOVERNMENT LOT 1
 SECTION 3, TOWN 27 NORTH, RANGE 10 WEST
 ACME TOWNSHIP, GRAND TRAVERSE CO., MI.





X2



X3



X1



X1



X1



X2



X5



X1



U-CHANNEL POST
7' HEIGHT ABOVE GROUND



X4



U-CHANNEL POSTS
7' HEIGHT ABOVE GROUND

STANDARD PRE-PRINTED
SIGN BLANKS



DATE: 7-12-13 ACCOUNT EXECUTIVE: KB
DRAWING SCALE: 1/2" = 1' GRAPHICS BY: W. BIALIK
FILENAME: 15761 DIRECTIOANL SIGNS
FILE LOCATION: AMOR N:\ DESIGN \ACME TOWNSHIP

PANTONE COLOR MATCHING:
PMS: AS SHOWN

3M / PSA FILM MATCHING:
PREMIUM:
TRANSLUCENT:
PSA: LAMINATE:

VER
1

APPROVED:
DATE:

AMOR SIGN STUDIOS, INC. reserves the exclusive right to bid on illustrated design. This design/illustration is protected by U.S. Federal Copyright Laws. Reproduction in all or part is STRICTLY FORBIDDEN.

**Traverse City to Charlevoix Trail
Preliminary Design - Acme through Elk Rapids
Project Agreement**

Between:

Elk Rapids Village;
Traverse Area Recreation & Transportation Trails, Inc.;
Networks Northwest; and Acme Township

This is a Project Agreement ("Agreement") between Elk Rapids Village ("Village"), 315 Bridge Street, Elk Rapids, MI 49629; Traverse Area Recreation & Transportation Trails, Inc. ("TART"), 148 E. Front St, Ste. 201, Traverse City, MI 49684, Networks Northwest ("Networks"), P.O. Box 506, Traverse City, MI 49685-0506, and Acme Township ("Acme"), 6042 Acme Road, Williamsburg, MI 49690.

The Parties enter into this Agreement on the basis of the following:

- A. The Parties share a common desire that the section of Traverse City to Charlevoix Trail ("TC-CHX Trail") between Acme and Elk Rapids:
 - a. Build on the existing Traverse City to Charlevoix Trail Concept and Development Plan;
 - b. Utilize a public process to gather input and feedback on design;
 - c. Identify a preferred trail alignment through preliminary design efforts;
 - d. Identify future engineering, construction, maintenance costs, and funding strategies;
 - e. Complete preliminary design by December 2018;

- B. The Parties acknowledge that in order to be successful there must be a coordinated approach to the following activities associated with the TC-CHX Trail Preliminary Design:
 - a. Phasing of trail development: concept planning, preliminary design, and finally construction engineering, maintenance plan, and construction;
 - b. Public and stakeholder engagement;
 - c. Public funding;
 - d. Private fundraising;
 - e. Preliminary design contract management;
 - f. Design input and approval;
 - d. Communications; and,
 - e. Media outreach.

Therefore,

- 1. The Village will:
 - a. Hold and manage the TC-CHX Trail Acme to Elk Rapids Preliminary Design contract;
 - b. Provide a representative for Project Team, Local Agency Group, and Elk Rapids Trail Team for the purposes of contributing to design;
 - c. Support public process in Preliminary Design;
 - d. Include TART and Networks in Preliminary Design;
 - e. Coordinate with TART and Networks on project communication, public engagement, and media outreach;
 - f. Allocate \$4,500 of Village funds for Preliminary Design;
 - g. Allocate \$19,499 from GTB 2% Grant for Preliminary Design;
 - h. Work with TART and Networks to identify potential sources for public funding for future construction and maintenance;

- i. Recognize past and present contributions of TART and Networks in published materials related to TC-CHX Trail efforts;
 - j. Support TART's private fundraising by sharing campaign news and links as appropriate; and,
 - k. Ensure all communication will acknowledge that project is a collaborative effort between Elk Rapids Village, TART, Networks, and Acme.
2. Acme will:
- a. Provide a staff person and/or official point of contact for the partners to work with on the project including Elk Rapids Trail Team, Project Team, and Local Agency Group;
 - b. Coordinate with TART and Elk Rapids Village on project communication, public engagement, and media outreach;
 - c. Participate in the design process; and,
 - d. Ensure all communication will acknowledge that project is a collaborative effort between Elk Rapids Village, TART, Networks, and Acme.
3. TART will:
- a. Provide a staff person and/or official point of contact for the partners to work with on the project including Elk Rapids Trail Team, Project Team, Local Agency Group, and Acme Parks & Trails Committee;
 - b. Provide a lead role in the following aspects of the Preliminary Design:
 - i. Participate in Preliminary Design process and provide expertise for best practices related to trail design;
 - ii. Develop communication and outreach plan;
 - iii. Integrate Preliminary Design in communication and outreach for regional TC-CHX trail efforts. Throughout the various planning and development stages, TART will facilitate communication and outreach to all regional partners; and
 - iv. Support community engagement through public and stakeholder meetings in the Preliminary Design effort.
 - c. Coordinate with Elk Rapids Village and Networks on project communication, public engagement, and media outreach;
 - d. Provide matching funds for Preliminary Design; and
 - e. Ensure all communication will acknowledge that project is a collaborative effort between Elk Rapids Village, TART, Networks, and Acme.
4. Networks will:
- a. Provide a staff person and/or official point of contact for the partners to work with on the project including Elk Rapids Trail Team, Project Team, and Local Agency Group;
 - b. Support project communication, public engagement, and media outreach;
 - c. Be a representative of Project Team at public and Local Agency Group meetings;
 - d. Facilitate Preliminary Design public and Local Agency Group meetings;
 - e. Participate in the design process; and,
 - f. Ensure all communication will acknowledge that project is a collaborative effort between Elk Rapids Village, TART, Networks, and Acme.

The parties have executed this Agreement on the date indicated below:

Traverse Area Recreation & Transportation Trails, Inc.:

Julia Clark, Executive Director Date

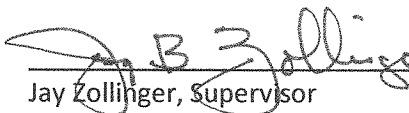
Elk Rapids Village:

Caroline Kennedy, Assistant Village Manager Date

Networks Northwest:

Mathias McCauley, Executive Director Date

Acme Township:

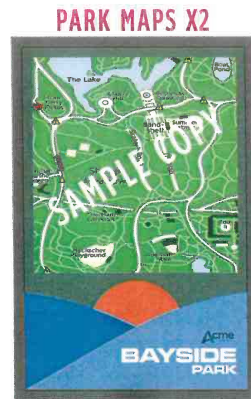
 _____ 7/11/18
Jay Zollinger, Supervisor Date



- 1 SINGLE FACE MONUMENT**
 ALUMINUM CABINET WITH REVEAL
 ALUMINUM FACES
 PSA DIGITAL GRAPHIC WITH LAMINATE
 220-10 WHITE VINYL "WELCOME TO"
 3/8" FLAT CUT ACRYLIC LETTERS
 STUD MOUNTED FLUSH
 "BAYSIDE PARK"



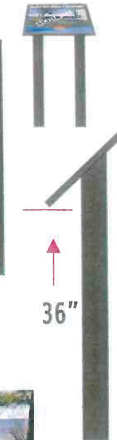
- 2 RESTROOM SIGNS**
 12" X 12"
 NTS
 FRAMELESS WALL MOUNTED



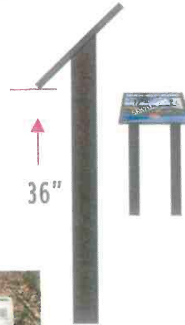
- 3 PARK MAPS X2**
 24" X 36"
 NTS
 VERTICAL MOUNT
 WITH FRAME
 60" FROM GRADE TO
 CENTER OF SIGN



- 4 24" X 36" PEDESTAL MOUNT**
 WITH FRAME - 2 POSTS
 NTS



- 5 FEATURES SIGNS X10**
 18" X 24"
 PEDESTAL MOUNT-
 2 POSTS
 WITH FRAME
 NTS



- 6 GROUND PLAQUES X15**
 8" X 6"
 PEDESTAL MOUNTED
 FRAMELESS (BASEPLATE)
 NTS



NOS. 2-6: .090 FIBERGLASS EMBEDDED DIGITAL GRAPHIC PANELS - ALUMINUM TUBE POSTS \ WALL MOUNT WHERE INDICATED



DATE: 5-14-18 ACCOUNT EXECUTIVE: KB
 DRAWING SCALE: NO SCALE GRAPHICS BY: W. BIALIK
 FILENAME: 15521 PARKS LOGO
 FILE LOCATION: AMOR N: \ DESIGN \ ACME TOWNSHIP

PANTONE COLOR MATCHING:
 PMS: AS SHOWN

3M / PSA FILM MATCHING:
 PREMIUM:
 TRANSLUCENT:
 PSA: LAMINATE:

VER
 1

APPROVED:
 DATE:

AMOR SIGN STUDIOS, INC. reserves the exclusive right to bid on illustrated design. This design/illustration is protected by U.S. Federal Copyright Laws. Reproduction in all or part is STRICTLY FORBIDDEN.

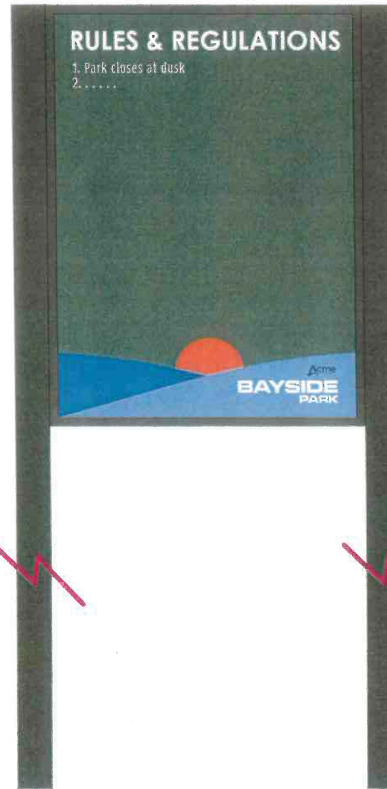
WAYFINDING X7



7 24" X 36"
NTS
VERTICAL MOUNT
WITH FRAME
60" FROM GRADE TO
CENTER OF SIGN



PARK RULES X2



8 36" X 48"
NTS
VERTICAL MOUNT
WITH FRAME
60" FROM GRADE TO
CENTER OF SIGN

PARK RULES X10



9 6" X 3"
NTS
BENCH MOUNT
TAMPERPROOF FASTENERS
FRAMELESS



NOS. 7-9: .090 FIBERGLASS EMBEDDED DIGITAL GRAPHIC PANELS _ ALUMINUM TUBE POSTS



DATE: 5-14-18 ACCOUNT EXECUTIVE: KB
DRAWING SCALE: NO SCALE GRAPHICS BY: W. BIALIK
FILENAME: 15521 PARKS LOGO
FILE LOCATION: AMOR N:\ DESIGN \ACME TOWNSHIP

PANTONE COLOR MATCHING:
PMS: AS SHOWN

3M / PSA FILM MATCHING:
PREMIUM:
TRANSLUCENT:
PSA: LAMINATE:

VER
1

APPROVED:
DATE:

AMOR SIGN STUDIOS, INC. reserves the exclusive right to bid on illustrated design. This design/illustration is protected by U.S. Federal Copyright Laws. Reproduction in all or part is STRICTLY FORBIDDEN.



Bayside park



DATE: 4-23-18 ACCOUNT EXECUTIVE: MA
 DRAWING SCALE: 1/2" = 1' GRAPHICS BY: W. BIALIK
 FILENAME: SITE SIGNAGE
 FILE LOCATION: AMOR N:\ DESIGN \ABSOPURE & PLASTIPAK

PANTONE COLOR MATCHING
 PMS: AS SHOWN

3M / PSA FILM MATCHING
 PREMIUM:
 TRANSLUCENT:
 PSA: LAMINATE:

VER
1

APPROVED:
 DATE:

AMOR SIGN STUDIOS, INC. reserves the exclusive right to bid on illustrated design. This design/illustration is protected by U.S. Federal Copyright Laws. Reproduction in all or part is STRICTLY FORBIDDEN.

Sorry to turn this in kind of last minute!

- 1) continue to focus on trail connectivity within and to each of the parks; South end of Bayside, Yuba natural area, Saylor park.
- 2) work out a funding strategy for further park and trails maintenance.
- 3) continue on with improvements at North Bayside.
- 4) look at small projects within Saylor park and Yuba natural area that will improve the users experience at those places without costing the township a large sum.

Marcie

Here are my thoughts on goals:

1. Continue to connect recreation assets through non-motorized transportation routes
 - Work with TART to complete trail construction to connect Bayside Park to Deepwater Point --Work with TART to complete the TART-VGT spur
 - Continue work to link Acme to Elk Rapids with TVC-CHX
 - Work with the Conservancy to build and connect trail at Sayler Park
 - Work with the Conservancy to expand trail system at Yuba Creek Natural Area
2. Pursue next phase of Bayside Park development
 - Plans to enhance/improve south Bayside Park
 - Provide amenities to increase recreation opportunities at the park, i.e. kayak/SUP vendor space, while protecting the sensitive beach area
3. Replace/Improve/Enhance signage at Bayside Park, Sayler Park and Yuba Creek Natural Area
4. Develop strategy and plan for Public Art

Thanks Shawn!

Barb

Shawn and Amy-

These are the best ideas that I have! Not sure if this is what you are looking for

1. Do an inventory of park amenities and look at possible amenities to add (although this might be part of the park plan) For example should we add a waterway, dog park, disc golf, informative nature trail or other ideas that I am not coming up with here!
2. New signage and branding for Acme recreation locations at existing parks and natural areas. Would it be good to work with the county or our own township website to have a map or something better than our current online presence?
3. Create a public art plan and look for options to incorporate are in to our parks
4. Work to connect the downtown corridor by foot- east or west side of the 31 corridor
5. Mark trails in Deepwater Point Natural Area
6. Develop and annual event or calendar of events for our parks.

Karly

Below are my thoughts on our 5 yr Acme Parks & Trails Goals/Priorities:

1. Focus on connecting our Trails to Nowhere!
 - a. Continue with our efforts to extend the TART Trail down the RR ROW to Holiday Inn Express/Lutheran Church/Dan Kelley/VGT. Also, need to look at how to connect it back west M-72 to N Bayside Park.
 - b. Continue our efforts to connect N Bayside Park to Deepwater Point Road
 - c. Karly has expressed frustrated that we have all this bay frontage on the south end with extremely limited access to it. I see my following proposal as five years out, due to having to wait our turn for another Trust Fund development grant. As I have discussed in the past, I would move the Bunker Hill boat launch north to the south side of the marina break wall. I would make it suitable for universal access (similar to Milton Twp.) and small watercraft (i.e. small fishing boats, kayaks, jet skis, etc. This area has substantially more width between the bay and the road, which would allow for a parking lot and basic bathrooms, which we would need if with the anticipated use. Also, there would only be a short distance to the dredged channel that extends out from the marina. Also, by moving the boat launch, this would make it more feasible to have the TART Trail cross at Bunker Hill by moving the white stop behind line at the light about 10' north. The TART Trail could extend north along the bay to the private residences north of the marina. The only private property in this stretch is the vet clinic, which has a sidewalk and a paved driveway that could be utilized for non-motorized traffic across the short distance (100' ?). My vision of the S Bayside Park is beach frontage, grass, TART Trail, benches, and picnic tables with a small parking lot and basic bathrooms.
2. N Bayside Park
 - a. Develop preliminary design and cost for a pavilion suitable for large group picnics, maybe, weddings, and concerts – similar in function, not design, to the Northport pavilion that I have shown you photos of. The preliminary design and cost estimate would allow us to “shop it” around to foundations and other funding sources. It would demonstrate that we have a vision to enhance the public use of our park.
 - b. Develop preliminary design and cost for tennis/pickleball courts west of the new north parking lot, where the sand volleyball court is. Again, it would allow us to offer it to the community to see if there is interest and funding.
3. Yuba Creek Nature Area
 - a. Develop the discussed trail from the overlook to the creek valley.
 - b. Develop a loop trail in the creek valley. The existing creek valley trail is a straight line through a field to nowhere! I would relocate the existing trail west to the base of the hillside and meander it with the topography. It would give an elevated view of the creek valley and there is more wildlife viewing at the edge between habitats. And, instead of an out and back trail, I would find a suitable spot - higher ground, narrower creek width – upstream to build a small pedestrian bridge across the creek. Then, I would build a new trail down the other side heading north to Yuba Road. It, also, would meander along the base of hills, which are not as steep. At Yuba Road, there would be a short, road walk, back to the existing parking lot/trailhead. The upstream pedestrian bridge would be near to the Bennett Rd trailhead, making the connection easy. We could do this with minimum cost, both in construction and in maintenance – it is mostly volunteer “grunt” work, which I am very familiar with.

Art in the Parks Project outline

The mission of the Art in the Park project is to enrich the community by integrating a wide range of art into Acme Township park spaces, with the recognition that art in a public setting is vital to creating an active, vibrant destination for the residents and visitors to our community.

Project Goals.

- Connect Acme Township residents and visitors to art within the public parks and trails spaces.
- Provide opportunities for Acme Township residents and visitors to have an in-person interaction with art.
- Foster conversation among residents and visitors to our parks and trails spaces.
- Create a sense of whimsy, curiosity, and delight in our parks and trails.
- Define and enhance our parks and trails spaces and our community.

Guidelines for proposed parks and trails artworks

- Artwork should have relevance to the communities values, culture, and people.
- Artworks should be physically suitable for outdoor display, including its maintenance and conservation requirements.
- The artworks should serve to activate and enhance the space.
- Scale of any artworks should be appropriate to the space and not detract from the natural beauty of the landscape
- Artworks should not damage in any way the surrounding environment or landscape.

Possible options for Art in the Park

- Temporary artworks in a regular and ongoing rotation
- Permanent commissioned artworks
- Community based artworks (overseen by a commissioned artist who has demonstrated professional ability)
- Interactive, structural artworks that are part of a larger parks and trails development plan (gardens, climbable structures, landscape based art, etc)

Possible first steps

- Start a dialogue with other community members, organizations, or committees who have successfully implemented similar projects in order to gain further insights for getting started.
- Identify types of near-term projects that quickly achieve the goals of the project, and also identify types of possible long-term projects that may need to be cultivated over a longer time period
- Inquire as to possible grants or donations that may apply to the project.
- Form a sub committee to jury future proposals and make recommendations to the township board regarding artworks, artists, locations, etc.



MEMORANDUM

Planning and Zoning

6042 Acme Road | Williamsburg, MI | 49690

Phone: (231) 938-1350 Fax: (231) 938-1510 Web: www.acmetownship.org

To: Acme Township Parks & Trails Committee
From: Shawn Winter, Planning & Zoning Administrator
CC:
Date: July 19, 2018
Re: Art In The Park

Dusty Smith and I met with Christie Minervini, former chair of the Traverse City Arts Commission, to discuss our intent to incorporate art into the Township parks. She was able to share insights from her past experiences and provided recommendations.

- Have a master plan that makes recommendations for public art
 - Creating a separate public art master plan would be overkill for our community
 - Since the art would be placed in our parks, and we are about to update our parks master plan, it would be appropriate to incorporate it into that plan through the update process
 - So much has changed in our parks system since the plan was first created that a significant public input session is warranted. This would allow the public to comment on the concept of art in the parks
- Adopt an ordinance outlining the process for selecting and located art in the public parks
 - This would occur after the incorporation of an art component into the parks master plan, if applicable.
- No need for a separate arts commission, or art selection panel
 - If the art is limited to our public parks, and is called for in the parks master plan, then it should be the parks and trails committee that serves this purpose.
- Build in both temporary and permanent installations
 - Permanent ones let the public see that the committee's efforts are worth it, especially if any public money is used in the process.
 - Don't play it so safe when choosing an installation that no one notices it. Art should invoke a response.
- Community by-in is key
 - Public input in the master planning process
 - If we get an installation donated, ask the public where they'd like to see it placed
 - Use social media, newsletters, public forums, resident votes (unofficial) to keep people informed and involved in the process
 - Have an annual artist pitch night where artist make their 3-5 minute pitch and people get to choose
 - Have a community art project that everybody gets to help create
 - Best if lead by a professional artist with experience in this space
- Acquiring Art
 - Donated money is out there, have to work for it though
 - Focusing on one project a year, no more

- There may be opportunities for art on loan:
 - Art Rapids
 - Michigan Legacy Art Park (near Crystal Mountain)
 - Meijer Gardens
 - Denno's Collection (Jason Dake)
 - Michigan Council for Arts and Cultural Affairs
 - Rotary
- When it comes to art on private property, we don't want to get involved in an official capacity. Happy to promote it, not pay or maintain, willing to ask developers to designate a space for art, etc.
- café (<https://www.callforentry.org/>) is a great tool to issue RFP's. A lot of artists are plugged into this site

Christie has a lot of resources, links, articles and websites that she will be sharing with us.